

INARCA TESTING PROCESSES

Control quality laboratory

System Management Certifications

All Inarca's production processes and operating methods meet precise environmental standards of quality and safety.

Certifications, catalogues and technical documentation are available here: <https://inarca.com/download/>



In addition, Inarca has decided to adopt a Management System in compliance with the SA8000 Standard, to manage all the activities necessary to comply with the requirements and to constantly improve performance according to Ethical and Social Responsibility.

All the information are available here: <https://sa-intl.org/>



Laboratory machine/equipment

The laboratory has the most advanced instrumentation of the best brands. Among the many instrument present are

TYPE OF TEST	MACHINE/EQUIPMENT	Number
Dimensional	ALTIMETER TYPE LINEAR HEIGHT SERIE 518-32	3
Dimensional	MICROMETER 0-25mm 25- 50mm 50-75 mm MITUTOYO	6
Dimensional	DIGIMATIC CALIPER MITUTOYO 0-150mm	6
Dimensional	DIGIMATIC INDICATORS MITUTOYO	3
Dimensional	OPTICAL MEASURE EQUIPMENT CNCFLASH200	1
Dimensional	OPTICAL MEASURE EQUIPMENT EOS 6.5.4	1
Dimensional	OPTICAL MEASURE EQUIPMENT SMARTSCOPE FLASH 200	2
Dimensional	SMART ZOOM 5 ZEISS	1
Dimensional	DIGITAL OMNI 3	2
Dimensional	CERAMIC GAUGE BLOCK SETS	1
Dimensional	STEEL GAUGE BLOCK SETS	3
Dimensional	CERA CALIPER CHECKER 20- 600 mm	1
Mechanical	TRACTION AND COMPRESSION MACHINE SHIMADZU AGS-X	1
Mechanical	LOAD FORCE MEASURING CELL 0-200 N	1
Mechanical	LOAD FORCE MEASURING CELL 0- 20 KN	1
Mechanical	DYNAMOMETER MFG 500 CAP 0-500 N + STAT	1
Mechanical	DYNAMOMETER DIGITAL SET 0-100 N + STAT	1
Mechanical	HARDNESS MEASURER "SHORE D"	1
Mechanical	MICRODUROMETER ROCKWELL LEITZ	1
Mechanical	MICRODUROMETER VICKERS	1
Mechanical	VIBRATION SYSTEM LDS V650/PA1000L +	1
Mechanical	TEST WEIGHTS SETS	1
Mechanical	ANALYTICAL BALANCE	3
Mechanical	BENDING WIRE TEST	1
Mechanical	GAUGE GO – NO GO	150

Laboratory machine/equipment

The laboratory has the most advanced instrumentation of the best brands. Among the many instrument present are

TYPE OF TEST	MACHINE/EQUIPMENT	Number
Flammability	GLOW WIRE TEST EQUIPMENT	1
Flammability	NEEDLE FLAME TEST EQUIPMENT	1
Electrical	DIELECTRIC STRENGHT EQUIPMENT UH 28 M/1COM	1
Electrical	DIELECTRIC STRENGHT EQUIPMENT GLP1-Ehv	1
Electrical	TRACKING TES RESISTANCE EQUIPMENT	1
Electrical	POWER SUPPLY 0-4 V 0-50 A	1
Electrical	POWER SUPPLY 0-35 V 0-60 A	1
Electrical	POWER SUPPLT 0-20 V 0-5 A	1
Electrical	POWER SUPPLY 0-2500 V 6- 30 A	2
Electrical	DIGITAL MULTIMETER	2
Electrical	DATA ACQUISITION UNIT	1
Electrical	OSCILLOSCOPE 50 MHz 200 MS/s	1
Electrical	CONTACT CHATTER DETECTOR	1
Electrical	PORTABLE CONDUCTIVITY PORTABLE INSTRUMENT	2
Climatic	PORTABLE DIGITAL THERMOMETER	2
Climatic	PORTABLE DIGITAL THERMOIGROMETRIC	1
Climatic	CLIMATIC CHAMBER HYGROS 15 C	1
Climatic	THERMAL SHOCK CHAMBER 2TEMP CST 84/2T	1
Corrosion	SALT SPRAY EQUIPMENT TYPE 610E400 LT.	1

Tests on plastic connectors

Dimensional test

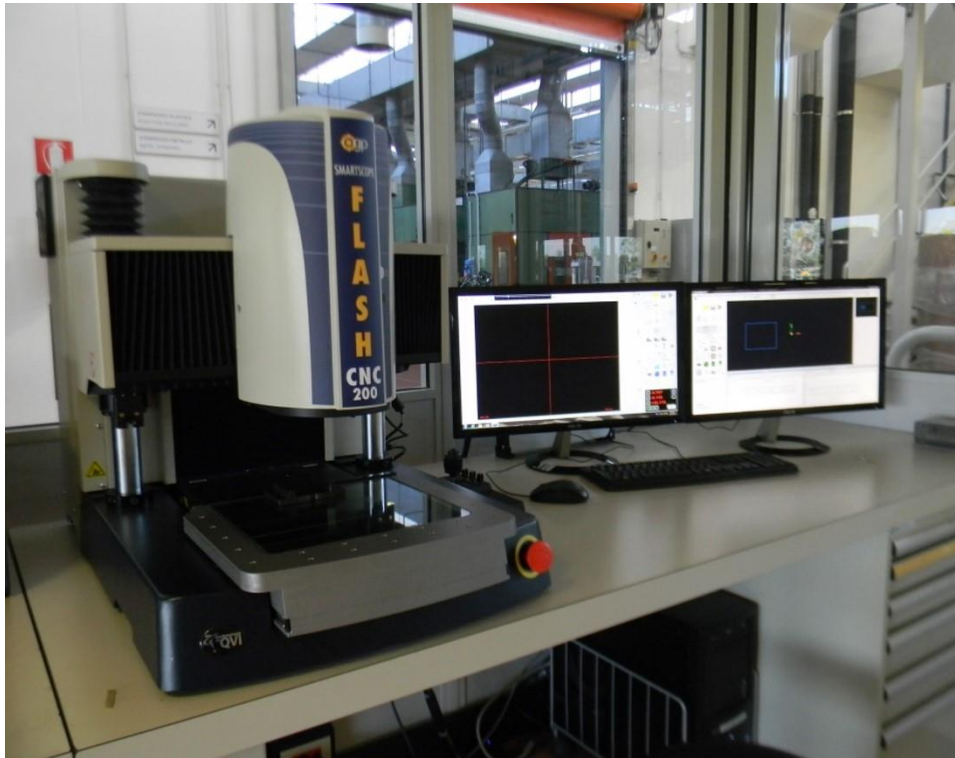
MEASURE EQUIPMENT



Tests on metal terminals

Mechanical test

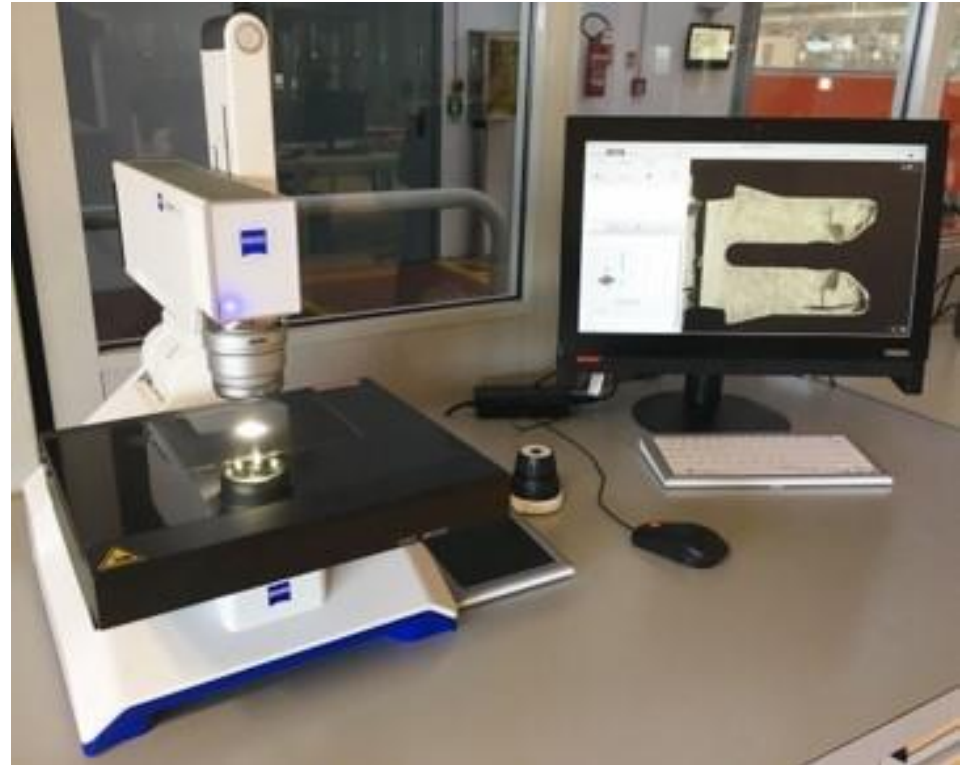
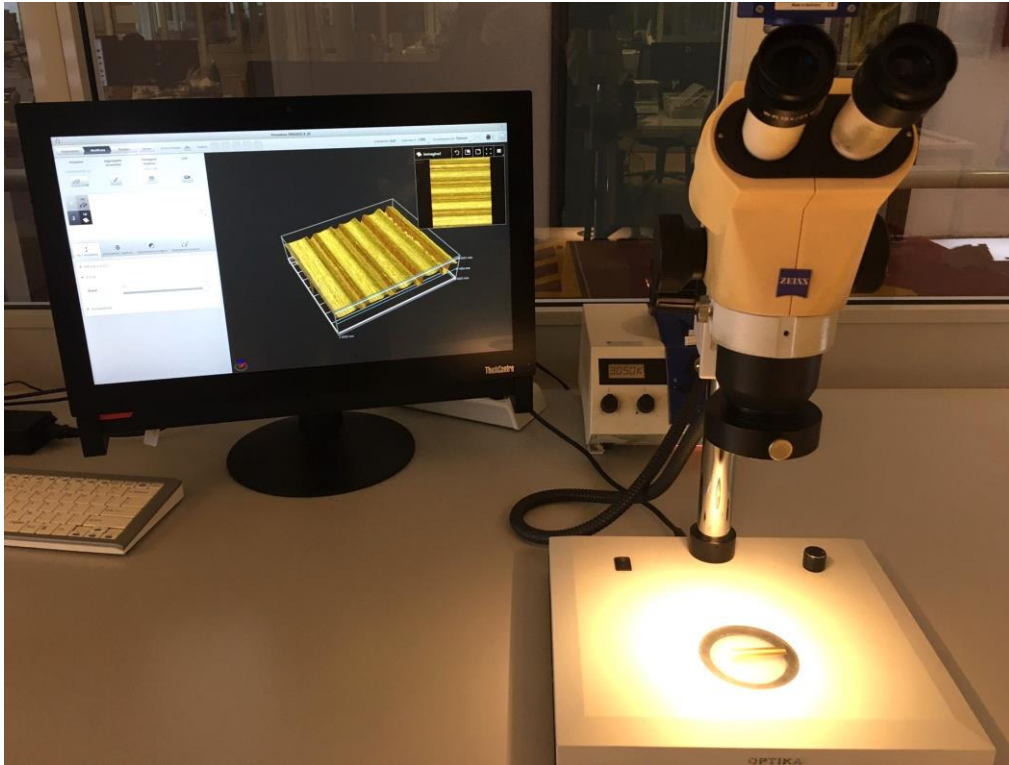
OPTICAL MEASURE EQUIPMENT



Tests on metal terminals

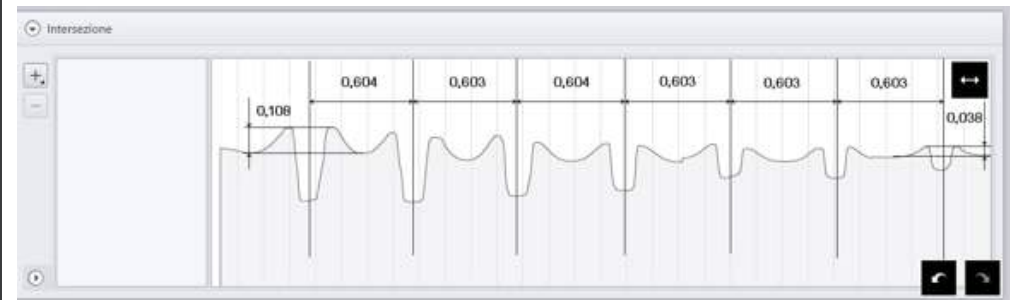
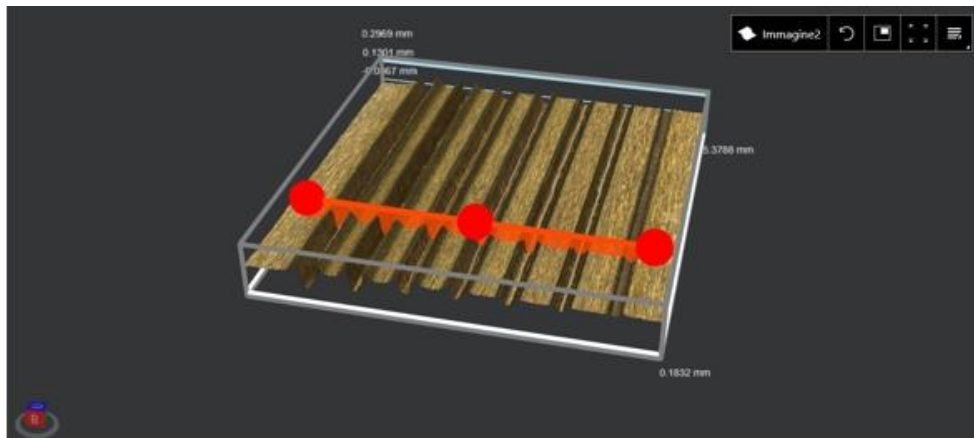
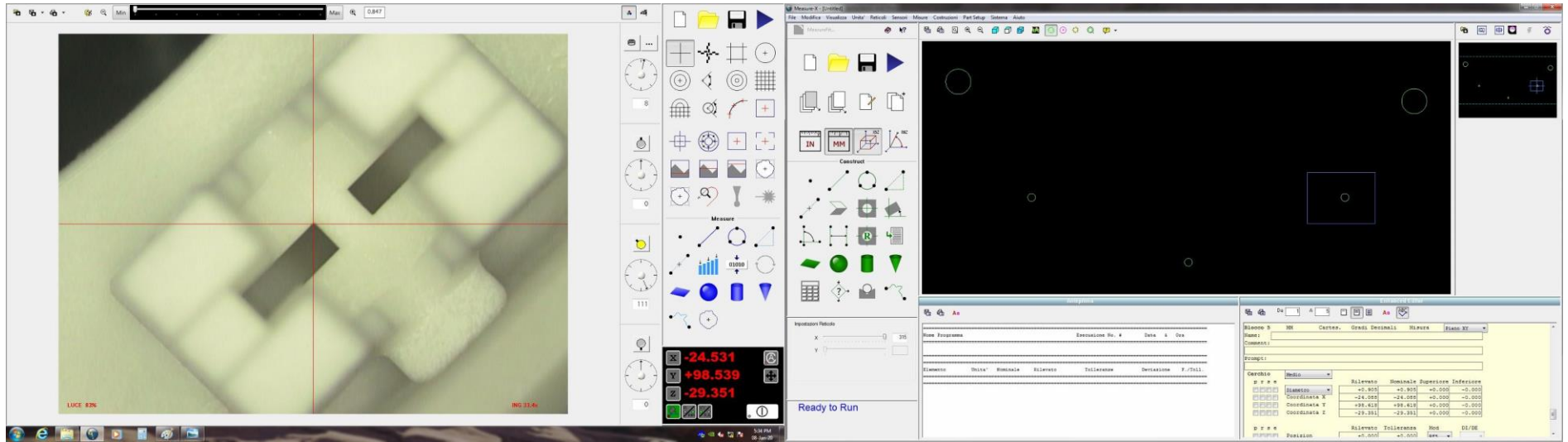
Mechanical test

OPTICAL MEASURE EQUIPMENT



Generic tests

Dimensional test



Generic tests

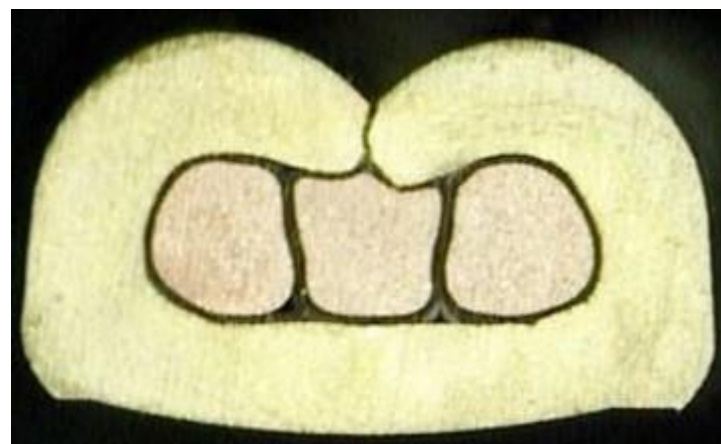
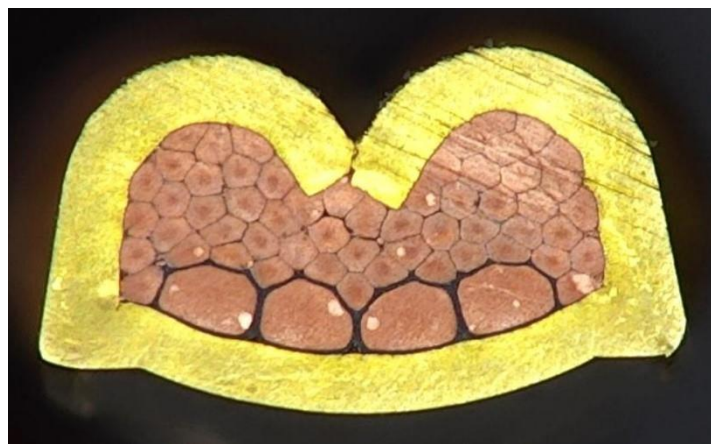
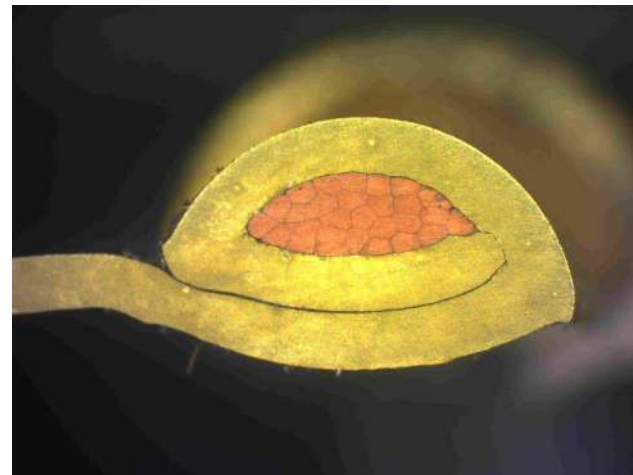
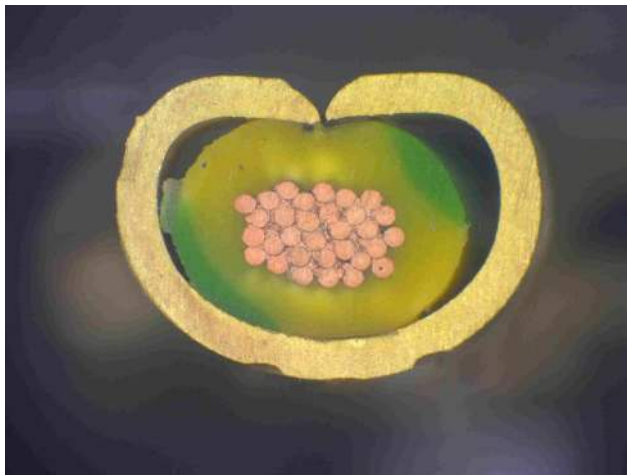
Dimensional test



Generic tests

Visual test

MICROSECTIONS



Generic tests

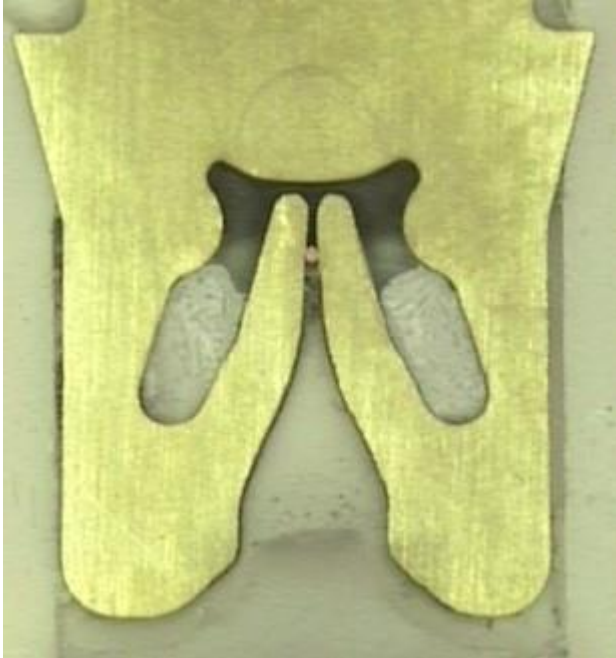
Visual test

MICROSECTIONS



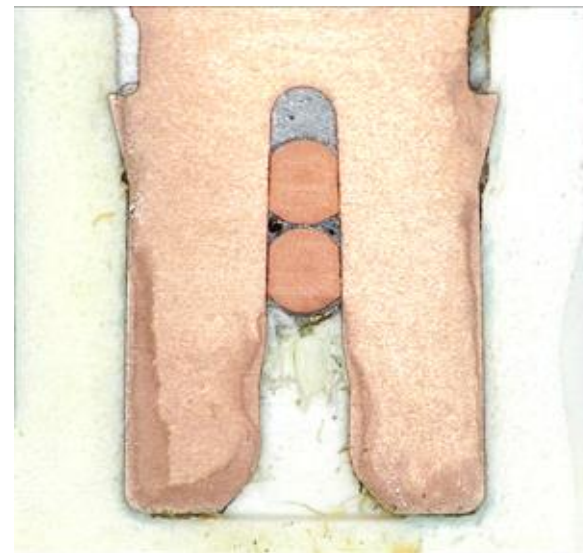
Generic tests

Visual test



Generic tests

Visual test



Generic tests

Visual test

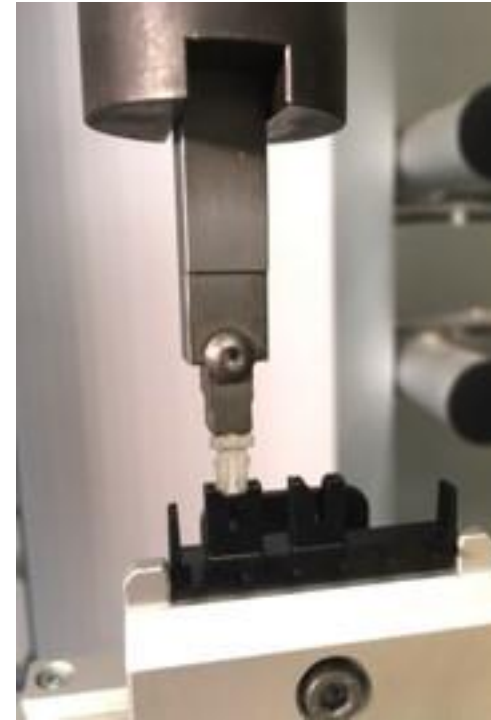
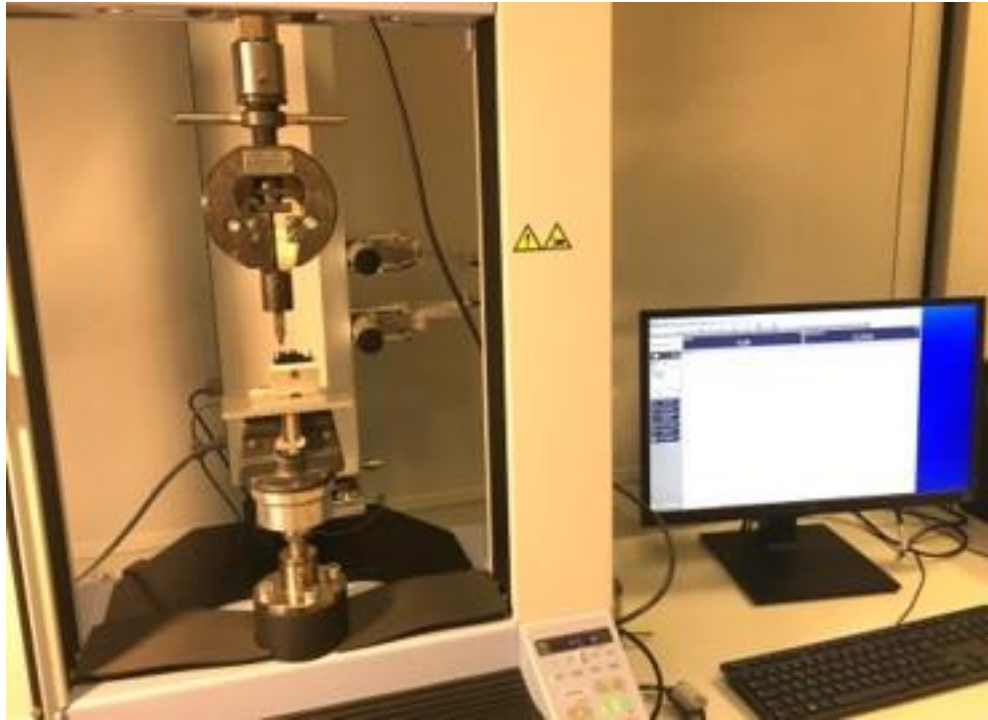


Tests on plastic connectors

Mechanical test

TERMINAL INSERTION AND EXTRACTION FORCE

(into/from connectors) According to Inarca Technical Specification.

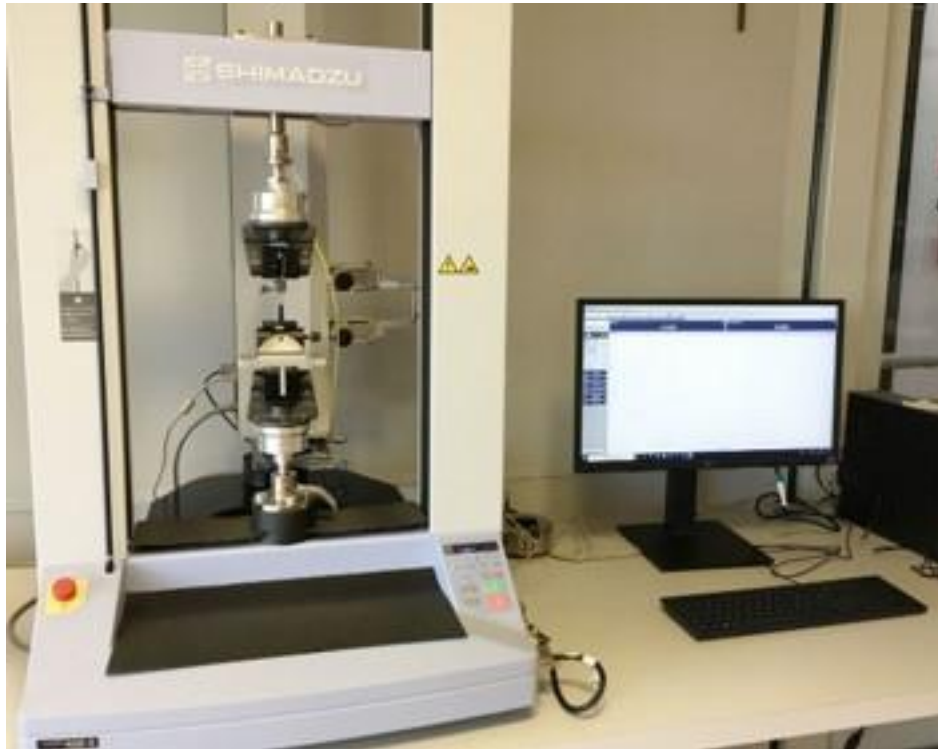


Tests on metal terminals

Mechanical test

INSERTION AND WITHDRAWAL

According to CEI EN 61210, CEI 48-15/IEC 760, UL 310 or Inarca Specification.

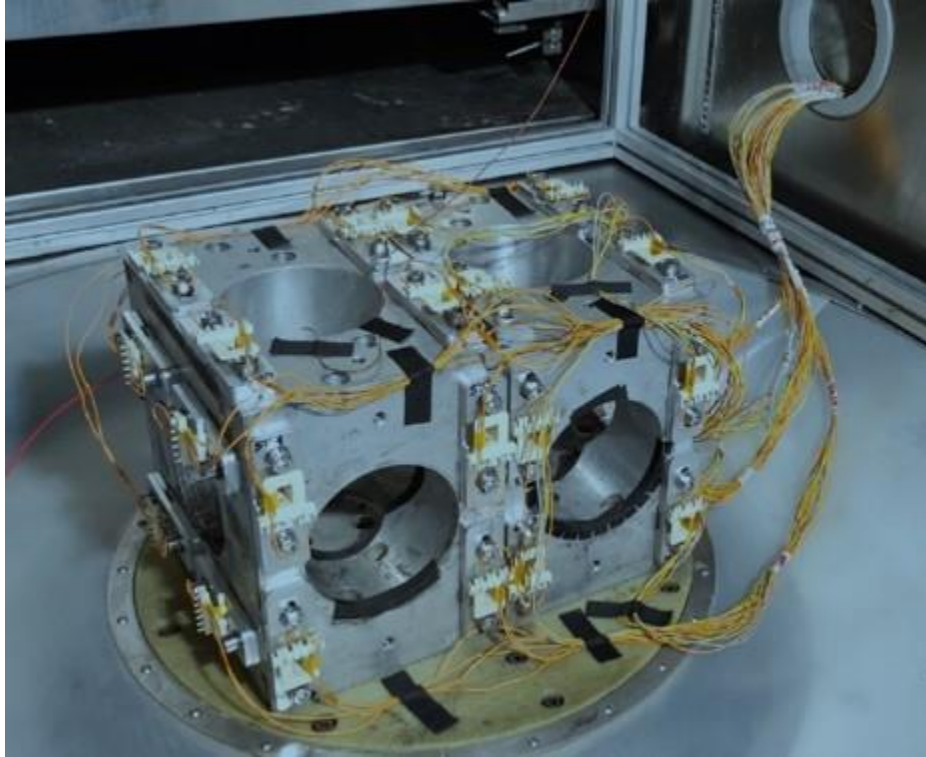


Tests on metal terminals

Mechanical test

VIBRATION (AND CONTACT DISTURBANCE)

According to IEC 512.

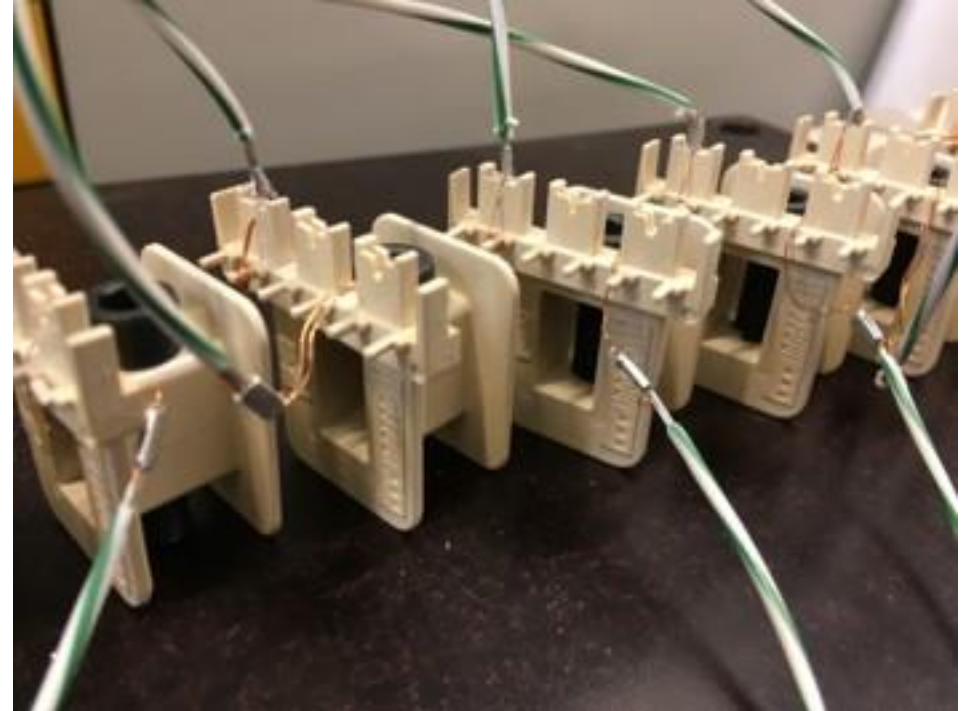
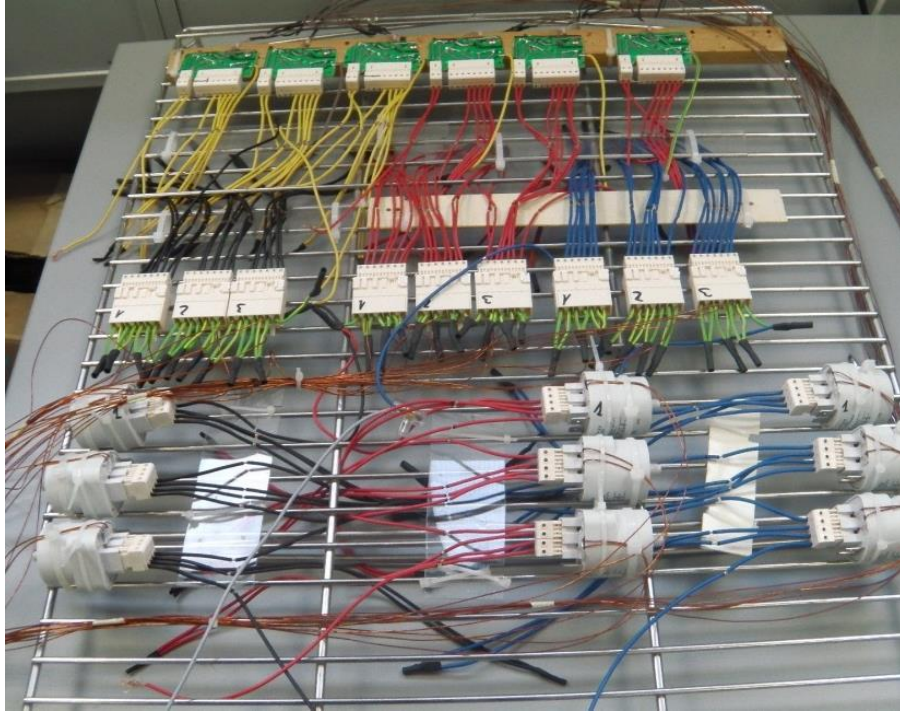


Tests on metal terminals

Electrical test

TEMPERATURE RISE CURRENT LOAD, CYCLIC

According to IEC 760; CEI EN 61210; UL310, CEIEN 60352-4.

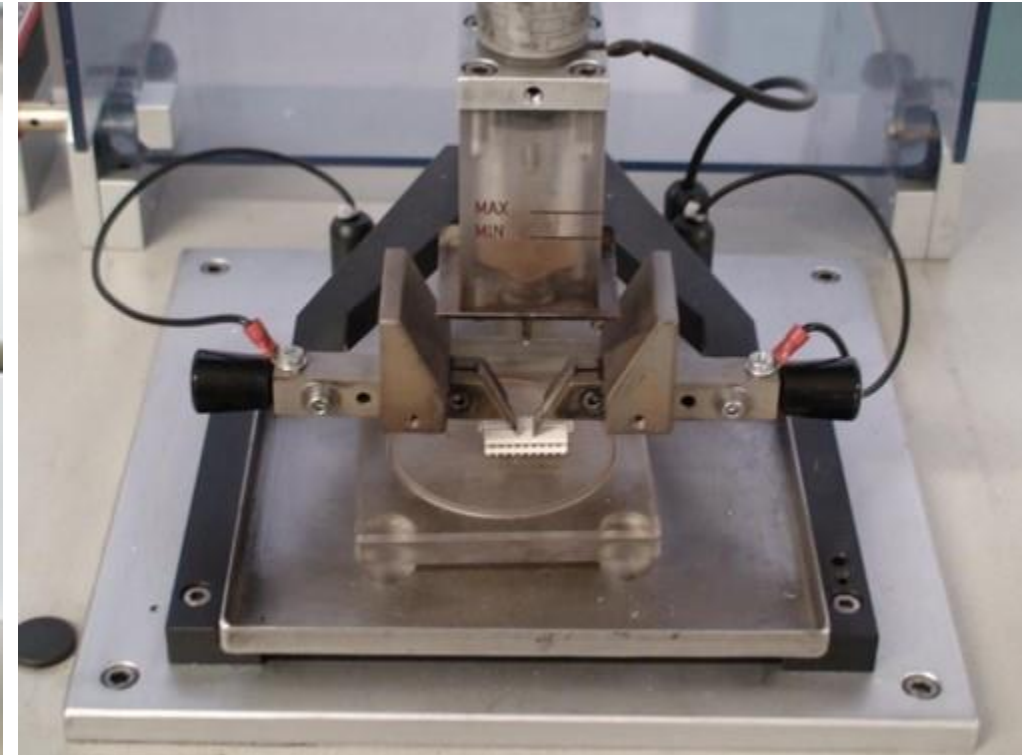


Tests on plastic connectors

Electrical test

TRACKING RESISTANCE

According to CEI En 60112 and CEI EN 60335-1.

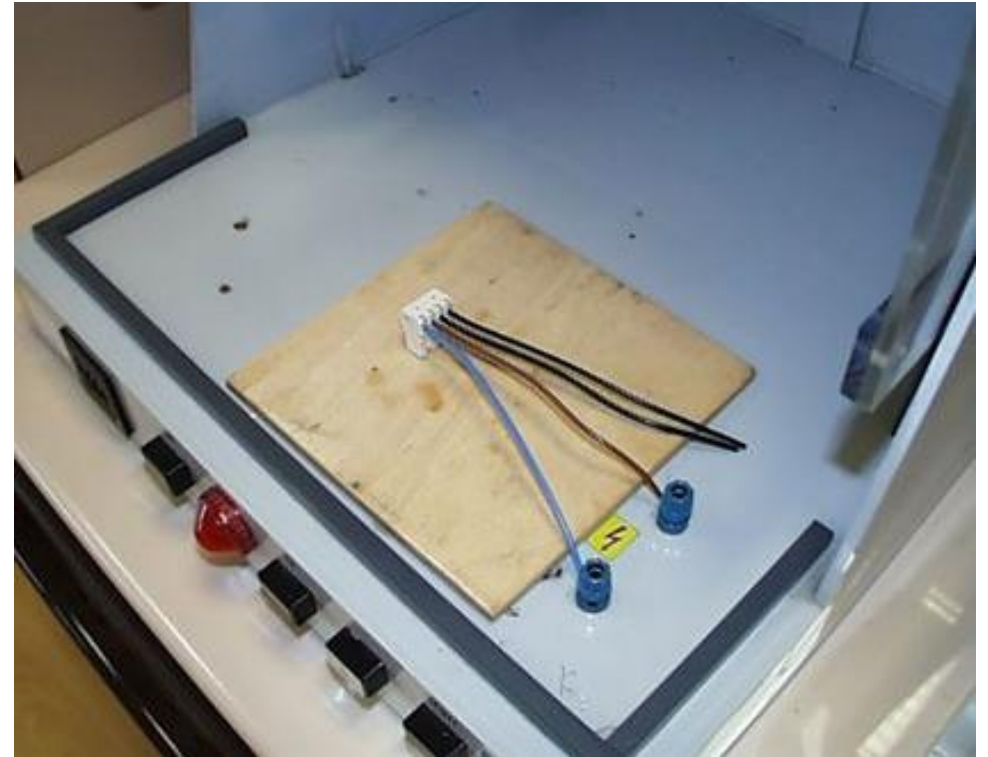
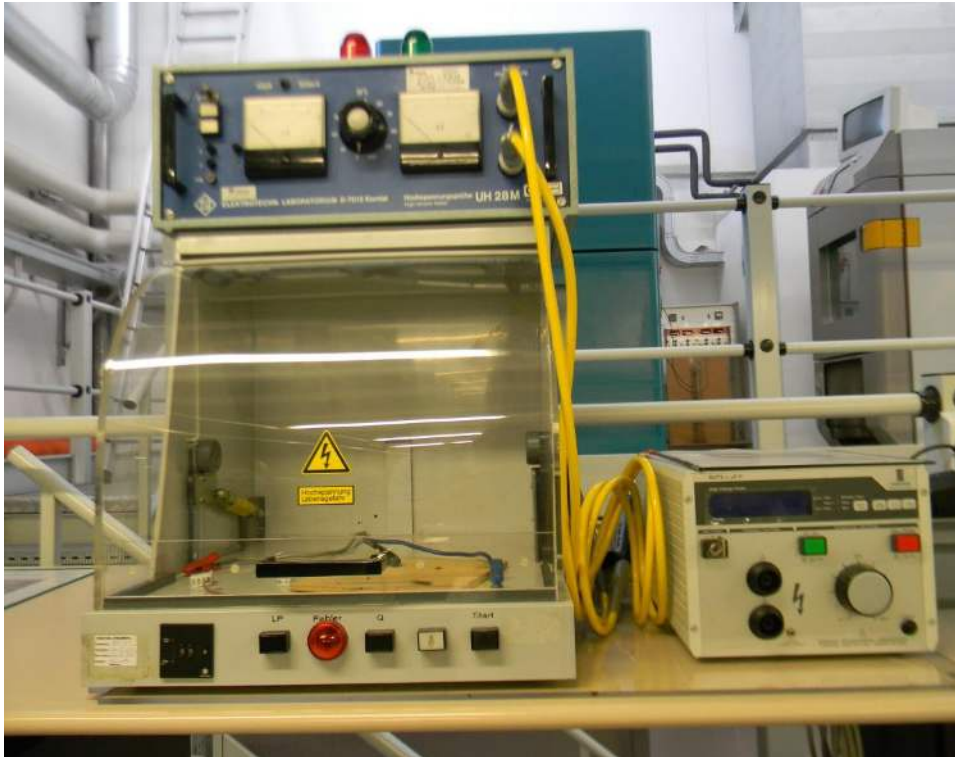


Tests on plastic connectors

Electrical test

DIELECTRIC STRENGTH

According to EN 60335-1.



Tests on plastic connectors

Flammability test

GLOW WIRE TEST

According to CEI EN 60695-2, CEI EN 60335-1.

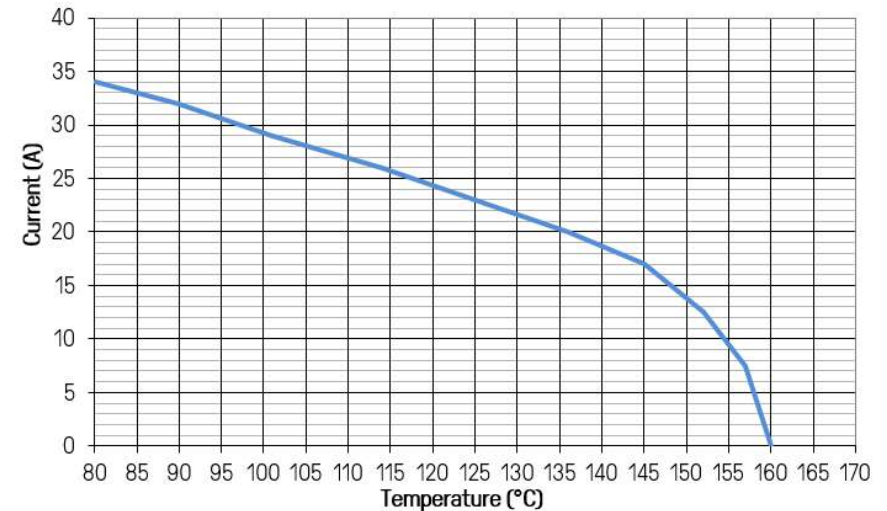
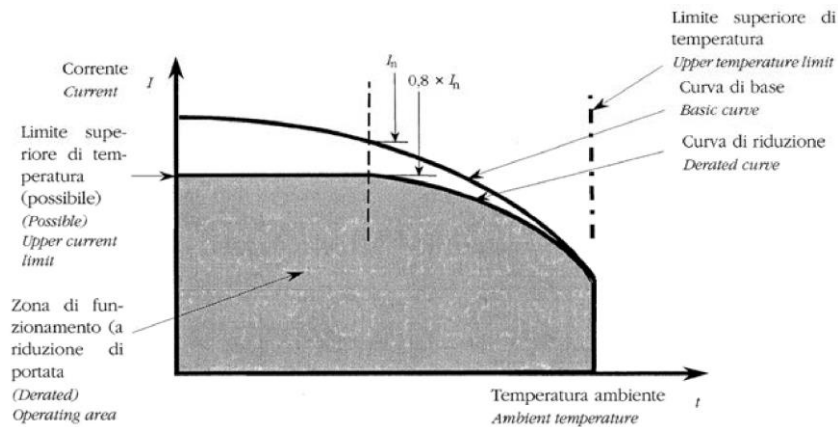
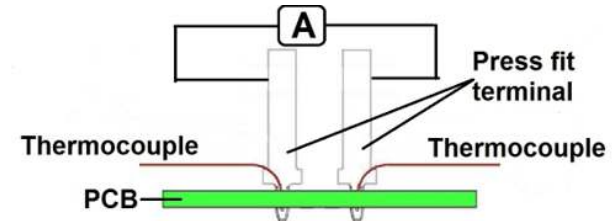
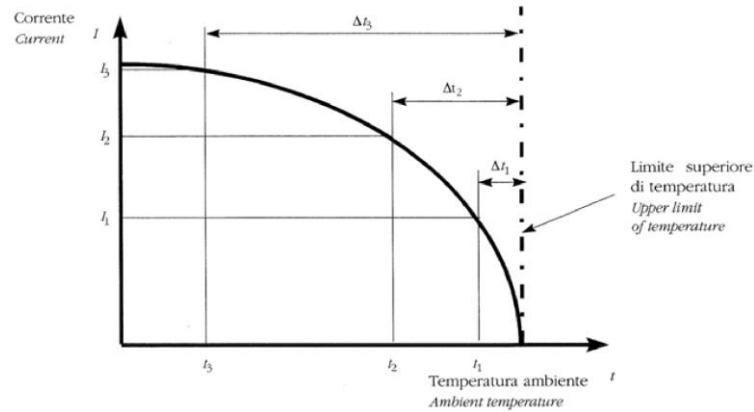


Tests on metal terminals

Electrical test

CURRENT-CARRYING CAPACITY TEST/DERATING CURVE

According to CEI EN 60512.



Tests on metal terminals

Climatic test

RESISTANCE TO HUMIDITY – TEMPERATURE LIFE

RAPID CHANGE OF TEMPERATURE – CLIMATIC SEQUENCE (DRY HEAT, DAMP HEAT, COLD)

According to EN 60335-1, CEI EN 61210; CEI EN 60352; CEI EN 60068.



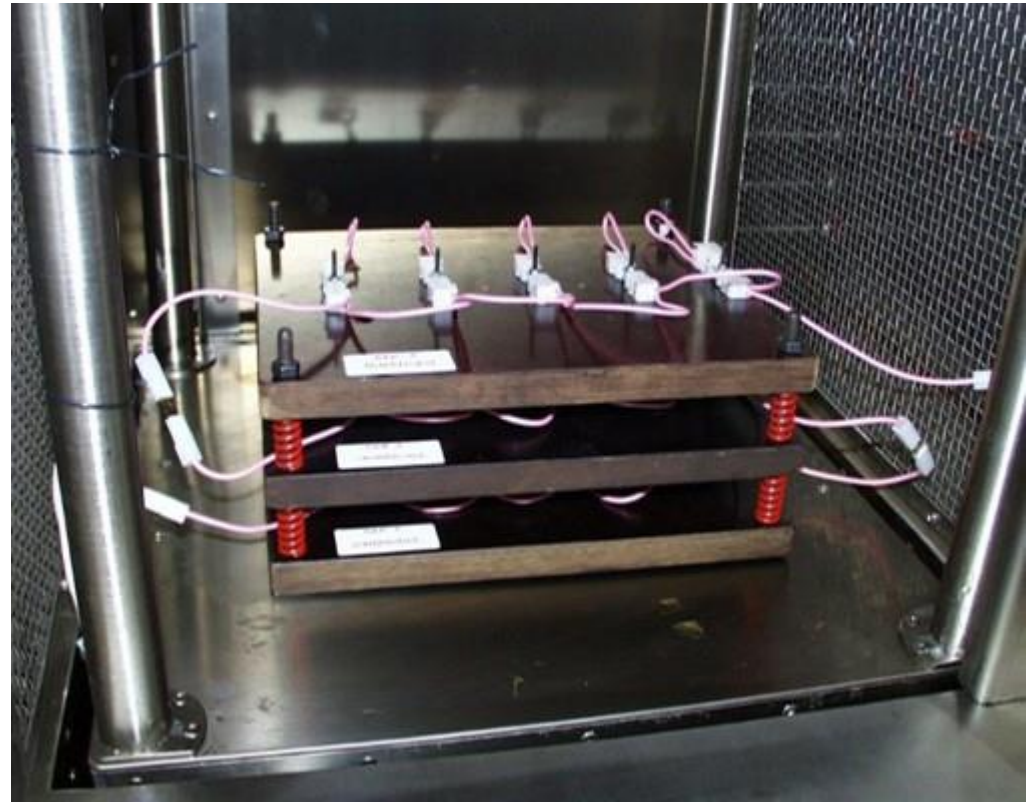
Tests on metal terminals

Climatic test

RESISTANCE TO HUMIDITY – TEMPERATURE LIFE

RAPID CHANGE OF TEMPERATURE – CLIMATIC SEQUENCE (DRY HEAT, DAMP HEAT, COLD)

According to EN 60335-1, CEI EN 61210; CEI EN 60352; CEI EN 60068.



Tests on metal terminals

Corrosion test

SALT SPRAY TEST

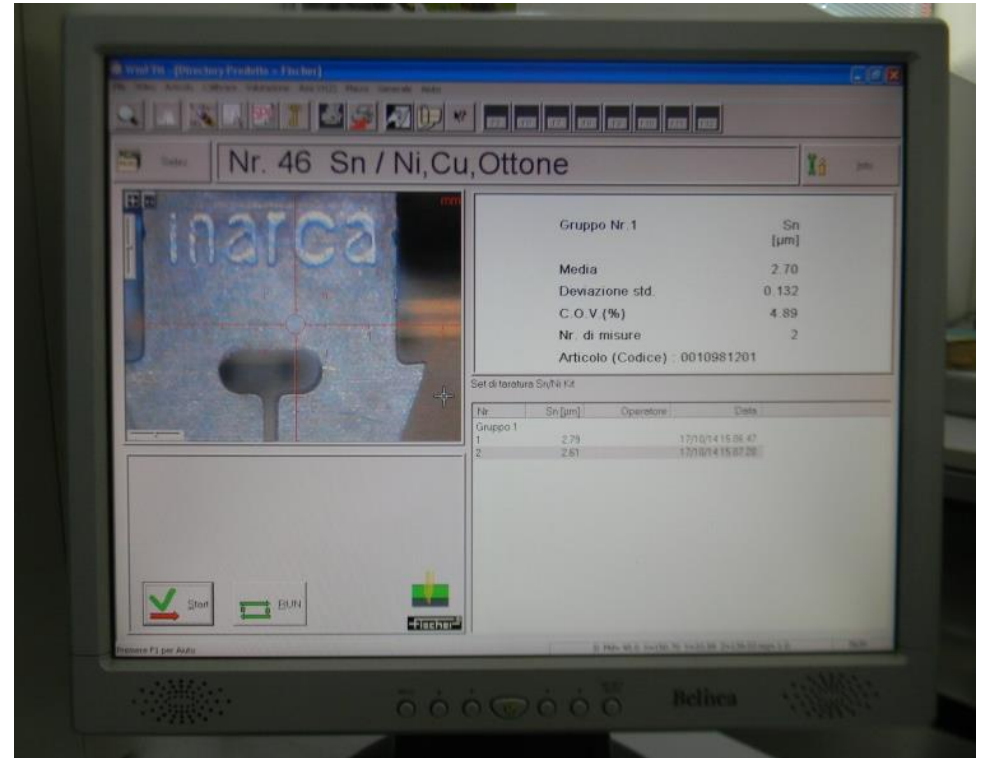
According to UNI EN ISO 9227.



Tests on metal terminals

Surface Treatment Thickness

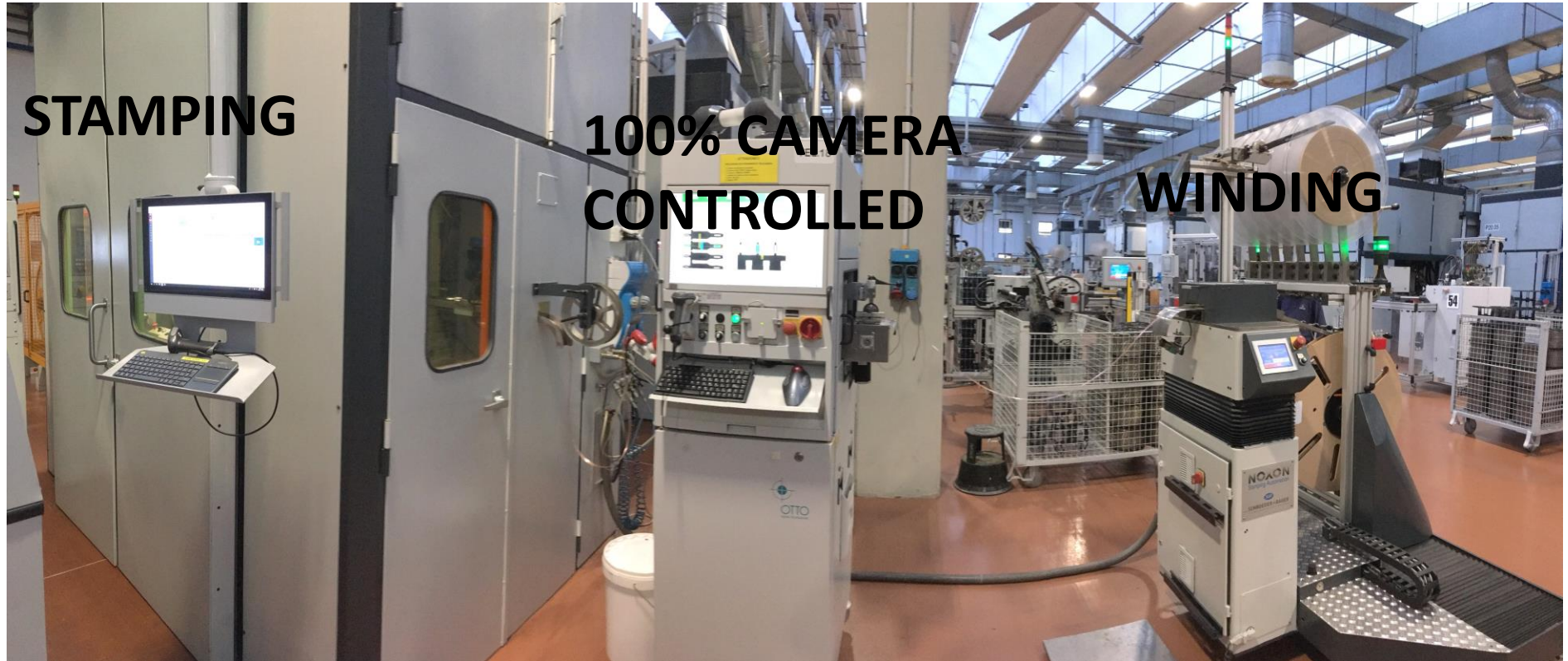
X-RAY ANALISYS



Tests on metal terminals

Dimensional Test

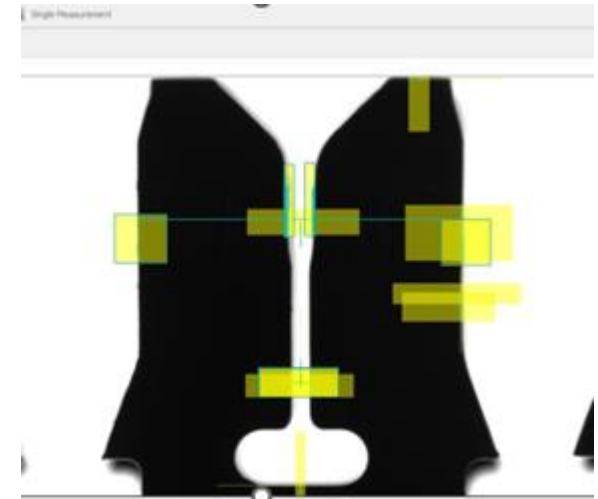
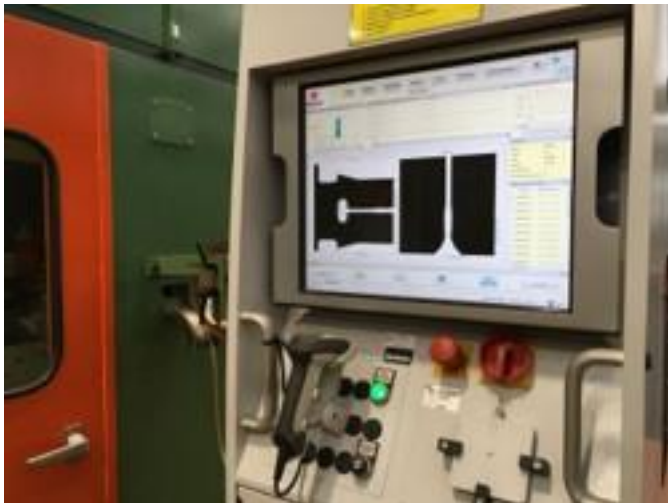
OPTICAL PRODUCTION 100% CONTROL



Tests on metal terminals

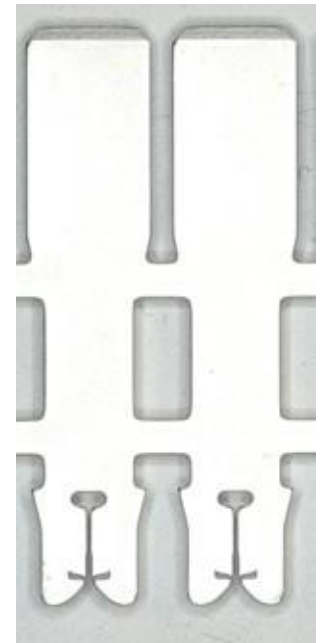
Dimensional Test

OPTICAL PRODUCTION 100% CONTROL



Tests on galvanic treatment

OPTICAL PRODUCTION 100% CONTROL



Thank you.